



LIMITLESS POTENTIAL

IGNITE PASSION

EMBRACE DIFFERENCE

**Hazlewood Newsletter
Autumn Term**

Dear Parents, Carers,

We hope that all the children have enjoyed their first few weeks back at school. As we come to the end of this first half-term, it is a good time to reflect on what we have all achieved.

I would like to sincerely thank you all for your wonderful support. Without us working together, we couldn't have achieved so much. Despite the lifting of COVID-19 restrictions, schools still face difficult challenges on a daily basis. However, our Hazlewood Team is always ready to find positive solutions to ensure that our children have the best learning experiences at Hazlewood.

Crucial to the success of our school are the positive relationships that exist between staff, children and parents. These relationships are built on trust and respect; they are highly valued and never taken for granted. For it is only by working together, that we can help our children develop into confident, mature and successful young people.

I would like to thank you all for making our Hazlewood Community Primary School such a happy and a wonderful place of work and learning. Huge congratulations to all our children for their excellent achievements this term. We are all very proud of you!

We are all looking forward to an exciting half-term leading to Christmas. We are currently planning exciting events for our school including 'Live' nativity plays, Carol concerts and our magical 'Christmas Fair'.

I am excited about the journey to becoming an outstanding school and making excellence a habit for the benefit of all our children. Your partnership in this journey is so very important and we are all looking forward to continuing to work with you and providing all the children with an education they can be proud of.

Have a wonderful half-term break with your family and friends!

**Stephane Bommel
Proud Headteacher**

Autumn 2 Dates

School opens: Monday 1st November 2021 / School closes for Christmas break: Friday 17th December 2021

| Dates for your diary | |
|----------------------------|--|
| 1.11.21 | School Photographs—All children must wear the school uniform |
| 4.11.21 | Diwali - celebrate in class |
| 5.11.21 | Bonfire night- celebrate in class |
| 8.11.21 - 11.11.21 | Art week- Remembrance Day |
| 10.11.21 | KS2 Remembrance Service at 2.00 p.m. St John's Church |
| 11.11.21 | Hazlewood CPS Remembrance Service 10.45 a.m. |
| 12.11.21 | Children in Need- Assembly and Dress up for fundraising Flu immunisation in school (Rec-Y6) |
| 15.11.21 - 19.11.21 | Anti- Bullying Week |
| 15.11.21 - 19.11.21 | Nursery Rhyme week |



| Christmas Dates for your diary | | | |
|--------------------------------|--|------------|-------------------------|
| Monday 06.12.21 | Year 3, 4, 5 & 6 Carol Service | 6.00 p.m. | St John's Church |
| Tuesday 07.12.21 | Nursery & Reception Nativity Performance | 9.30 a.m. | School Hall |
| Tuesday 07.12.21 | Year 1, 1/2 & 2 - Christmas Performance | 2.00 p.m. | School Hall |
| Wednesday 08.12.21 | Reception & KS1 pantomime Snow White | 10.00 a.m. | Whitley Bay Playhouse |
| Thursday 09.12.21 | Nursery & Reception Nativity Performance | 9.30 a.m. | School Hall |
| Thursday 09.12.21 | Year 1, 1/2 & 2 - Christmas Performance | 2.00 p.m. | School Hall |
| Monday 13.12.21 | Key Stage 2 Christmas Party | 1.30 p.m. | School Hall |
| Monday 13.12.21 | Hazlewood 'Christmas in Wonderland' Fair | 3.30 p.m. | School |
| Tuesday 14.12.21 | KS2 Pantomime Sleeping Beauty | 10.00 a.m. | Tyne Theatre |
| Tuesday 14.12.21 | KS1 Christmas Party | 1.30 p.m. | School |
| Wednesday 15.12.21 | EYFS Christmas Party | 1.30 p.m. | School |
| Thursday 16.12.21 | Nursery—Christmas! Let's Meet Santa | 8.30 a.m. | Rising Sun Country Park |



Hazlewood
Community Primary School


LIMITLESS POTENTIAL

IGNITE PASSION

EMBRACE DIFFERENCE

'Welcome Back Celebration'

On behalf of all the team at Hazlewood, I would like to sincerely thank you for your outstanding support on Friday 24th September 2021. Unfortunately, I was unable to attend this important event having tested positive for COVID-19 that week (*and not on holiday in France!*). However, the feedback received from the team was heart-warming knowing that the turn-out was incredible that day and that everyone had a wonderful time, enjoying the rides, tombola, ice-creams, candyfloss, food stands and more...

The 'Welcome Back' Family celebration event raised a staggering £1,506.35 for our school. We are all very proud of the success of this event.  THANK YOU!



Message from Mrs Simmister

I would like to send a huge THANK YOU to all our parents who have been so very patient and understanding when Mrs Barron and myself have been dealing with the current Covid-19 situation. Everyone has been very helpful and have dealt with our requests with such good humour. I have even had parents giving me their phones and asking me to send the screenshots to myself! I think school has done a great job, getting the children back into school and keeping them in school with minimum disruption and we couldn't have done it without the full co-operation of our lovely parents!



Thank You!



Hazlewood
Community Primary School

LIMITLESS POTENTIAL

IGNITE PASSION

EMBRACE DIFFERENCE

SUMDOG CHAMPIONS

Our Year 4 became Champions of the North Tyneside Learning Trust / Sumdog Maths competition. This was a contest between all trust schools in the Borough.

The children thoroughly immersed themselves into the competition. They were so inspired they continued the competition at home. After a week, Year 4 were placed in first position. Great job!



Super Science - Year 4

We have been learning about our teeth and digestive system.

We investigated which solutions have an effect on our teeth. Over a week we observed how the shell of an egg changed whilst being submerged in different solutions.

Our conclusions were that we should avoid coffee because it stains our teeth. We should definitely avoid sugary and acidic drinks as this erodes the enamel on our teeth.





Hazlewood
Community Primary School

LIMITLESS POTENTIAL

IGNITE PASSION

EMBRACE DIFFERENCE

Bikeability

Bikeability is the government's national cycle training programme. It helps you learn practical skills and understand how to cycle on today's roads. Year 4 and 5 had a great day on their bikes learning how to stay safe. Joshua even ditched the stabilisers! The trainer said that they were a fantastic group of children to teach. He said that they were incredibly brave trying out all of the different skills and many of the children surprised themselves at how good they were! Some children that were afraid to attempt certain skills (e.g. cycling with one hand) surprised themselves and because they persevered were able to complete the challenges set.

Well done everyone!



European Language Day

On Monday 27th September 2021, our school took part in the European Language day. In Year 4, the children celebrated the day by focusing on Spain. The children learnt to greet each other and ask our names in Spanish. The children also counted to twenty. The best part of the day was the Spanish food tasting. We sampled paella, potatoes Bravas, chorizo and churros. It was Mucho Bueno!



HAPPY HALLOWEEN



A huge thank you to our children and families for supporting our Halloween Event on Thursday this week. The level of support was truly incredible! The children looked absolutely amazing in their costumes. It was wonderful to see all the children having such a wonderful time at the party too! It's been such a long time since we were able to organise such events for our children. Seeing the children dancing and playing games together in the main hall was simply magical! Happy Halloween everyone!

Total money raised: £408.03

THANK YOU SO MUCH





Hazlewood
Community Primary School

LIMITLESS POTENTIAL

IGNITE PASSION

EMBRACE DIFFERENCE

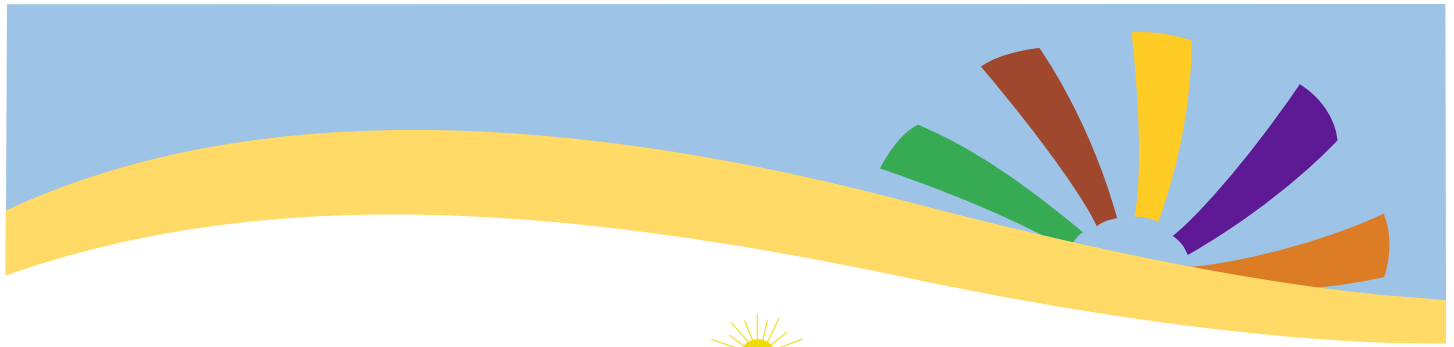


**Sports Clubs
Autumn 2**



| Clubs 24 children per club max | Time | Date |
|--|--|--|
| KS1 Football club Mr Foalle | 3:15pm -4:20pm * | Monday- 6 sessions Monday 1 st November – Monday 6 th December |
| Reception Multi- Skills club Mr Foalle | 8:00am – 8:40am | Tuesday – 6 sessions Tuesday 2 nd November – Tuesday 7 th December |
| KS2 Multi- Sports club Miss Tolson (SCITT student) and Miss Rutter | 3:15pm -4:00pm Finishes earlier than other clubs | Tuesday – 6 sessions Tuesday 2 nd November – Tuesday 7 th December |
| KS2 Football Mr Foalle | 3:15pm -4:20pm | Wednesday- 6 sessions Wednesday 3 rd November – Wednesday 8 th December |
| KS1 Multi- Skills Mr Foalle | 3:15pm -4:20pm | Thursday- 6 sessions Thursday 4 th November – Thursday 9 th December |





Hazlewood
Community Primary School

LIMITLESS POTENTIAL

IGNITE PASSION

EMBRACE DIFFERENCE

Congratulations to Hazlewood Team for achieving the Primary Science Quality Mark

I am delighted to inform you that Hazlewood Community Primary School has been awarded the Primary Science Quality Mark. This award raises the profile of science in our school beyond recognition.

I would like to express my warmest congratulations to Mrs Patterson for all her hard work which has gone into achieving this award and to our Hazlewood team for continuing to demonstrate commitment and expertise in science leadership, teaching and learning at Hazlewood Community Primary School.



ACTIVE CHALLENGE

We would welcome our families to send of us photos of the children keeping active outside school. The photographs can include walks, bike rides, playing on the trampoline, climbing a mountain or surfing in the North sea.

We all know how important keeping active is and we would love to share the photos during our school assemblies. The children will be inspired to see each other being active and enjoying their favorite activities . We will be able to celebrate keeping healthy as well sharing ideas with others.

Please tweet any photos on our school twitter @HazlewoodCPS

Email: stephane.bommel@ntlp.org.uk

