



LIMITLESS POTENTIAL

IGNITE PASSION

EMBRACE DIFFERENCE



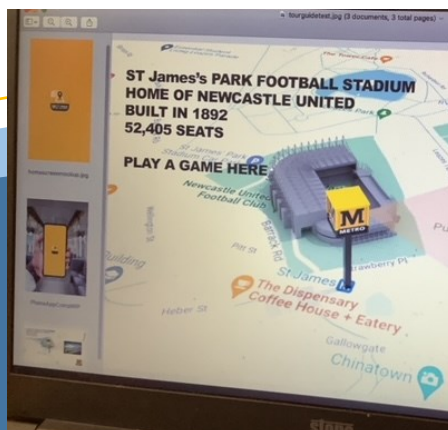
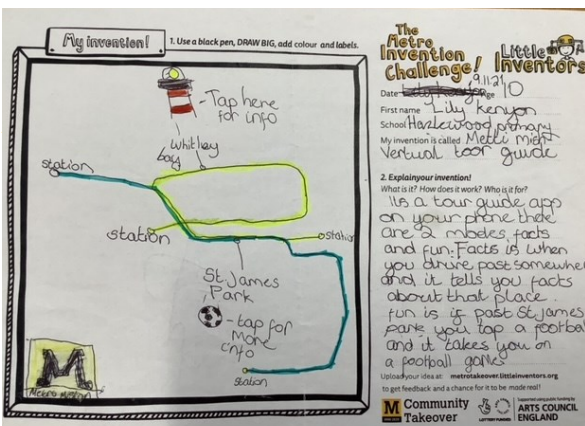
Congratulations Lily Kenyon in Year 6!

Little Inventors worked alongside the Tyne and Wear Metro for school children to enter a competition to invent a new and fun way to use the metro. Our school took part in the competition and we had a great response with some fantastic inventions.

The winner of the competition was announced last week and we are so proud to say the winner was Lily Kenyon from Year 6 in our school.

Lily had an amazing opportunity to work alongside a designer who is creating her invention. Lily has designed an App for people to use while on the metro. The app tells you all about the places you travel past e.g. St James' Park, Grey's Monument, St Mary's Lighthouse and many more.

Huge congratulations Lily! We are all so proud of your achievements!





LIMITLESS POTENTIAL

IGNITE PASSION

EMBRACE DIFFERENCE

Congratulations to Erin in Year 2!

Our winner!

In December, children from key stage one had the opportunity to enter a competition organised by The Tyne Tunnel. The competition was to design a mural for the Tyne Tunnel 2 building.

The winning design will be painted by local artist Mark One87 on the building in spring. Many schools across the North East entered the competition and the designs have recently been judged, the top four entries have been chosen.

We are so pleased and proud to say that Erin's design (age 6 in Year 2) was chosen for the final four amongst hundreds of entries.

This a fantastic achievement! We are all very proud of you Erin!





LIMITLESS POTENTIAL

IGNITE PASSION

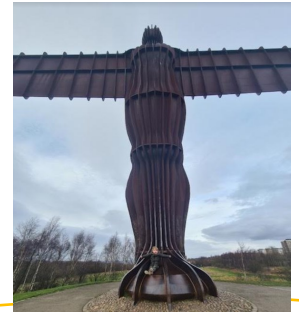
EMBRACE DIFFERENCE

Newcastle Project : Home Sweet Home

This half term, the children at Hazlewood have been immersing themselves in the local area. They have encountered many exciting opportunities including a whole host of trips. Year 3 visited The Baltic and Year 6 The Laing Art gallery. Year 4 experienced life as a miner at Woodhorn Colliery and Year 5 took themselves back to Victorian Newcastle at the Discovery museum. It doesn't end there either!

There are lots of other trips to look forward to next half term including visits to both the Stephenson Railway museum and The Grace Darling museum. The children have thoroughly enjoyed learning about the amazing place that we live, both in school and at home.

The learning that has taken place in school has been exceptional and we have been overwhelmed at how this has inspired home learning. Children have been excited to share this and we have thoroughly enjoyed looking at all of your wonderful models, fantastic films amazing artwork and sampling the delicious cakes. We look forward to continuing this project next half term and to seeing more of your wonderful work. **The exceptional work will be on display at an exhibition on Thursday 7th April 2022 at school.**





Hazlewood
Community Primary School

LIMITLESS POTENTIAL

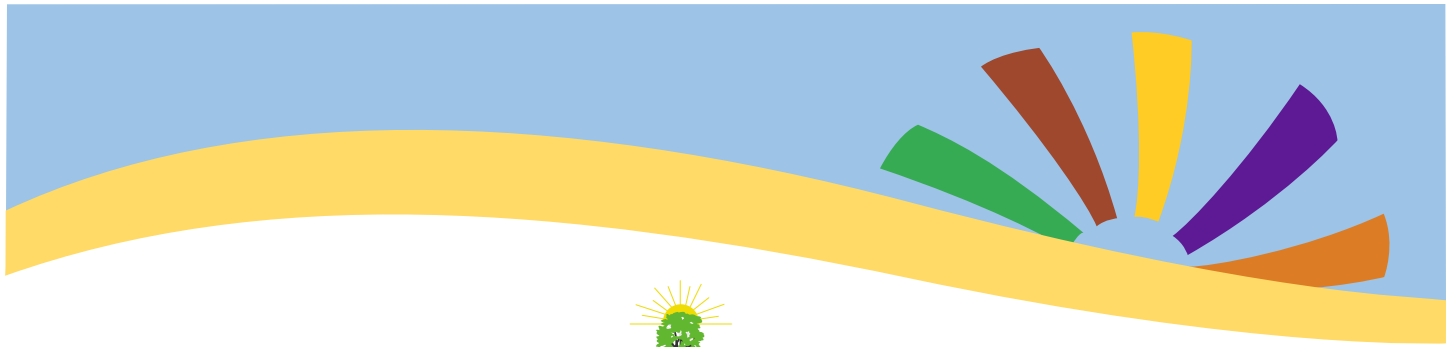
IGNITE PASSION

EMBRACE DIFFERENCE

Our Year 4 children's passion for art was ignited when a local artist Jess Dougherty came into school to work with the class to create an outstanding mural, representing where we live. The children applied their painting and collaging skills to produce the mural based on our whole school project 'Our Local Area'.

"It was really really good, we mixed paints and painted different parts. It was cool making it with the artist and I love it!" Jake ✨





LIMITLESS POTENTIAL

IGNITE PASSION

EMBRACE DIFFERENCE

Enrichment Activities

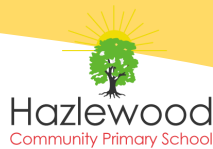
In addition to the exciting enrichment opportunities that the Local Area project has allowed us to experience, we have also been fortunate to have taken part in a variety of additional activities. Musical Theatre made a welcome return to Hazlewood and the children have been busy auditioning for a variety of roles for the upcoming production of Little People. We enjoyed participating in the NSPCC number day and were very impressed at your very creative costume ideas. Chinese New Year was celebrated with each Key stage taking part in assembly to mark this. All children were given a fortune cookie kindly provided by Mr Lovatt. The children in Years 5 and 6 have been working with a local musician, learning traditional songs from the North East. They even composed their own song about the local area. And if that wasn't enough, our half term was rounded off with children from Years 3 4 5 and 6 taking part in a cheerleading afternoon. We wish you lots of luck for your performance at The Eagles match!

Please find below the list of enrichment activities which took place during the Spring term.

Enrichment Curriculum Activities

Spring term 2022

Year Groups	Enrichment Activity	Curriculum Links
KS2	Musical Theatre Club	Art, Music, English, PSHE
Year 6	Safety Works	PSHE
Year 6	Laing Art Gallery and local area walk	Art and local history
Year 5	Discovery Museum and workshop	Local History
Year 5	Bikeability Level 2	PE, PSHCE (road awareness)
Year 5/6	Music - Lizzie	Music/ Local History
Year 4/5	Swimming	PE, PSHCE (water awareness)
Year 4	Trip to Woodhorn Colliery	Local area study
Whole school	NSPCC Number Day	Maths enrichment
Whole School	STEM week	Science, Maths
Year 3	Baltic Arts Centre and Quayside Tour	Art, History, DT
KS2 Children	Cheerleading Workshop	PE, Dance
EYFS KS1 KS2	Chinese New Year Assemblies	Geography History PSHE
Years 3 4 5 6	Cheerleading Bootcamp	PE, Local Area
Y3 4 5 6	Basketball Match / Cheerleading performance	PE, Local Area



LIMITLESS POTENTIAL

IGNITE PASSION

EMBRACE DIFFERENCE

Hazlewood Newsletter

Important dates for your diary:

Term Dates

Spring 2 Term dates: 01.03.22 - 08.04.22 included

Summer 1: 26.04.22 - 26.05.22 included

Summer 2: 07.06.22 - 21.07.22 included



INSET Days:

Monday 28th February 2022

Monday 25th April 2022

Monday 6th June 2022

Friday 27th May 2022: Extra Bank Holiday– Queen’s Platinum Jubilee

Due to the Platinum Bank holiday falling on Friday 3rd June 2022 (during half-term break), schools have been allocated an extra Bank Holiday day Friday 27th May 2022.

Dates	Times	Events Spring Term 202	Location
28.02.22	All day	School closed—Teacher Training Day	School
01.03.22	All day	Year 5 Bikeability	School
03.03.22	All day	World Book Day	School
18.03.22	All day	Red Nose Day— Fundraising Day	School
14.03.22	All day	STEM Week	School
01.04.22		Spring Parents/ Carers Reports	
04.04.22	P.M.	Spring Parent/ Teacher Progress meetings	T.B.C.
07.04.22	P.M.	Newcastle Exhibition	School



Hazlewood
Community Primary School

LIMITLESS POTENTIAL

IGNITE PASSION

EMBRACE DIFFERENCE

Year 2 SATS

The Year 2 SATs will take place from Monday 16th May 2022 - Friday 20th May 2022

Children take SATs in:

Reading:

The reading test for Year 2 pupils is made up of two separate papers:

Paper 1 consists of a selection of texts totalling 400 to 700 words, with questions interspersed

Paper 2 comprises a reading booklet of a selection of passages totalling 800 to 1100 words. Children will write their answers in a separate booklet

Maths:

The Key Stage 1 maths test is made up of two papers:

Paper 1: arithmetic, worth 25 marks and taking around 15 minutes.

Paper 2: mathematical fluency, problem-solving and reasoning

English grammar, punctuation and spelling

Paper 1: a 20-word spelling test

Paper 2: a grammar, punctuation and vocabulary test,





LIMITLESS POTENTIAL

IGNITE PASSION

EMBRACE DIFFERENCE

Year 6 SATS

At the end of Year 6, children will sit tests in:

Reading

Maths

Spelling, punctuation and grammar

These tests will be both set and marked externally, and the results will be used to measure your child's progress and the school's performance. Your child's marks will be used in conjunction with teacher assessment to give a broader picture of their attainment.

KS2 SATs Dates 2022 – SATs Week 2022

Monday May 9th 2022: Spelling, punctuation and grammar (Grammar/Punctuation Test) – 45 minutes

Monday May 9th 2022: Spelling, punctuation and grammar (Spelling Test) – 20 minutes

Tuesday May 10th 2022: Reading Test – 60 minutes

Wednesday May 11th 2022: Maths Paper 1 (Arithmetic) – 30 minutes

Wednesday May 11th 2022: Maths Paper 2 (Reasoning) – 40 minutes

Thursday May 12th 2022: Maths Paper 3 (Reasoning) – 40 minutes

A POEM FOR YEAR SIX



BY SPARKY

DON'T GET STRESSED.

JUST DO YOUR BEST.

REMEMBER, YOU'VE BEEN BLESSED

WITH SKILLS SATS CAN'T TEST.



Hazlewood
Community Primary School

LIMITLESS POTENTIAL

IGNITE PASSION

EMBRACE DIFFERENCE

Extra after-school activities

Days	Key Stage	Times	Activities	Leader	End dates
Mondays	Reception	1st Session 07.03.22 8.00 a.m. - 8.40 a.m.	Wake up Shake up	J. Foalle	Last session: 28.03.22
Tuesdays	KS1 *	1st Session 08.03.22 8.00 a.m. - 8.40 a.m.	Sports Hall Games	J. Foalle	Last session: 29.03.22
Mondays	Reception/ Year 1/ Year 2	1st Session: 07.03.22 3.15 p.m. - 4.15 p.m.	Yoga Club	K. McKenna	Last session: 04.04.22
Mondays	Reception to Year 6	1st Session 07.03.22 3.15 p.m. - 5.00 p.m.	Forest School Club	K. McKenna	Last session: 04.04.22
Tuesdays (Spring & Summer Terms)	KS2	1st Session: 01.03.22 3.15 p.m. - 5.00 p.m.	Musical Theatre	S. Bommel	Last session: 05.04.22
Wednesdays	KS2	1st Session 09.03.22 3.15 p.m. - 4.15 p.m.	Football	J. Foalle	Last session: 30.03.22
Thursdays	KS2	1st Session 10.03.22 3.15 p.m. - 4.15 p.m.	Sports	J. Foalle	Last session: 31.03.22
Thursdays	Year 6	1st Session: 03.03.22 3.15 p.m.— 4.00 p.m.	Film Club	J. Lovatt	Last session: 07.04.22
Fridays	Year 6	1st Session: 04.03.22 3.15 p.m.— 4.00 p.m.	Music Club	J. Lovatt	Last session: 08.04.22
Fridays	KS2	1st Session: 04.03.22 3.15 p.m. - 4.15 p.m.	Yoga Club	K. McKenna	Last session: 08.04.22